

# Preserving Our Past to Steer Our Future



Copyright © 2004, The Great Cranberry Historical Society  
Cranberry House Prospectus (v2)

# Introduction

This prospectus presents a new project of the  
Great Cranberry Historical Society:

## **Cranberry House**

A permanent home for the historical museum,  
plus a new multi-purpose cultural center,  
for the island's future.

closeup of  
Cranberry House  
at its original site



# Why have a museum?

Great Cranberry Island has a long history. Seafaring men had fish camps here at least as early as 1760, and the 1790 census lists five families permanently settled here.

The sea isolates the island, forcing people to be self-reliant, yet interdependent. Current generations can take pride in their forefathers: hard working people who respected island resources and founded a cooperative and vital community.

But now the island is changing. Old-timers are dying or moving off, their homes passing to children or summer folk. Memories are being lost and island heirlooms going to antique dealers—or the dump.

History is the foundation of a community, critical to understanding and maintaining its character. Believing this, concerned islanders formed the Great Cranberry Historical Society in 1993 to preserve what remained. They scanned old photographs and interviewed longtime island residents. But there was no place to store and present the collection.

In the Spring of 2000, even the Longfellow School became vacant, and newspapers spoke of “the death of the island.”

Society members strove to reverse that trend. On August 6, 2000 they opened a Historical Museum in those empty schoolrooms to help rejuvenate the island and celebrate its nautical past.

The museum has inspired overwhelming support. The pride of actually having their own museum encourages islanders to loan or donate historic items from their homes, attics, and barns.

Financial support for the museum comes from outside grants, and from yearly memberships. The year the museum opened, memberships increased **ten fold** from the previous year. Strong support has continued every year since.

Clearly, the island wants a museum.

History is the foundation of a community, critical to understanding and maintaining its character.



# Benefits of a museum

The island's heritage will not be lost! The museum's collection of artifacts and documents has steadily increased. All documents are housed in archival boxes and recorded in a Finding Aid, currently totaling 738 items.

The island's heritage will not be lost!

Many interesting documents have come to light:

- Constitution of Cranberry Isles Temperance Society (1840)
- Constitution of the Mutual Improvement and Benevolent Society (Ladies Aid)
- Speeches by Abigail C. Preble to the Ladies Benevolent Society (1863-65)
- Captains' shipwreck testimony to William P. Preble (1867-78)
- Bylaws of the Congregational Church of Cranberry Isle (1906)
- Letter from John D. Rockefeller, Jr. to Capt. Bracy, 1939
- Navigation logbook of Carrie (Stanley) Richardson

Museum workers also preserve "future history." We have over 50 video tapes of interviews with longtime islanders, and important present-day happenings.

Historical preservation publications and videos are made in the museum's Multimedia Room, which can produce bound color booklets, audio CDs, and video DVDs. Those services are an island-wide resource available to all. But the grants which paid for it could not have been obtained without a museum.

Considered financially, Cranberry House will expand and diversify the island economy. Since its founding, the Historical Society has:

- attracted 5 corporate, 3 state, and 8 private grants, enriching island resources
- contracted for a museum host, adding to the island labor pool
- paid for improvements to the school: new electrical outlets, and painting
- attracted 100s of visitors, boosting business for the island ferries and stores

All this has been accomplished without taxes and imposed fees. Since Cranberry House would be a more spacious permanent facility, we may reasonably expect these financial benefits to continue and expand.

Clearly, having a museum is a plus for the island. But to survive, the museum needs a permanent home.

Some videos



*See Appendix 3 for a list of all our publications and videos.*

# A vision takes shape



## Cranberry House

The Historical Society has received a donation of two acres of prime woodland near the Church and Community Center, expressly as a museum and cultural activity site.

Both new and existing buildings were considered for the site. The Society prefers to reuse a building with a historic background. This has the added incentive that preservation grants are available.

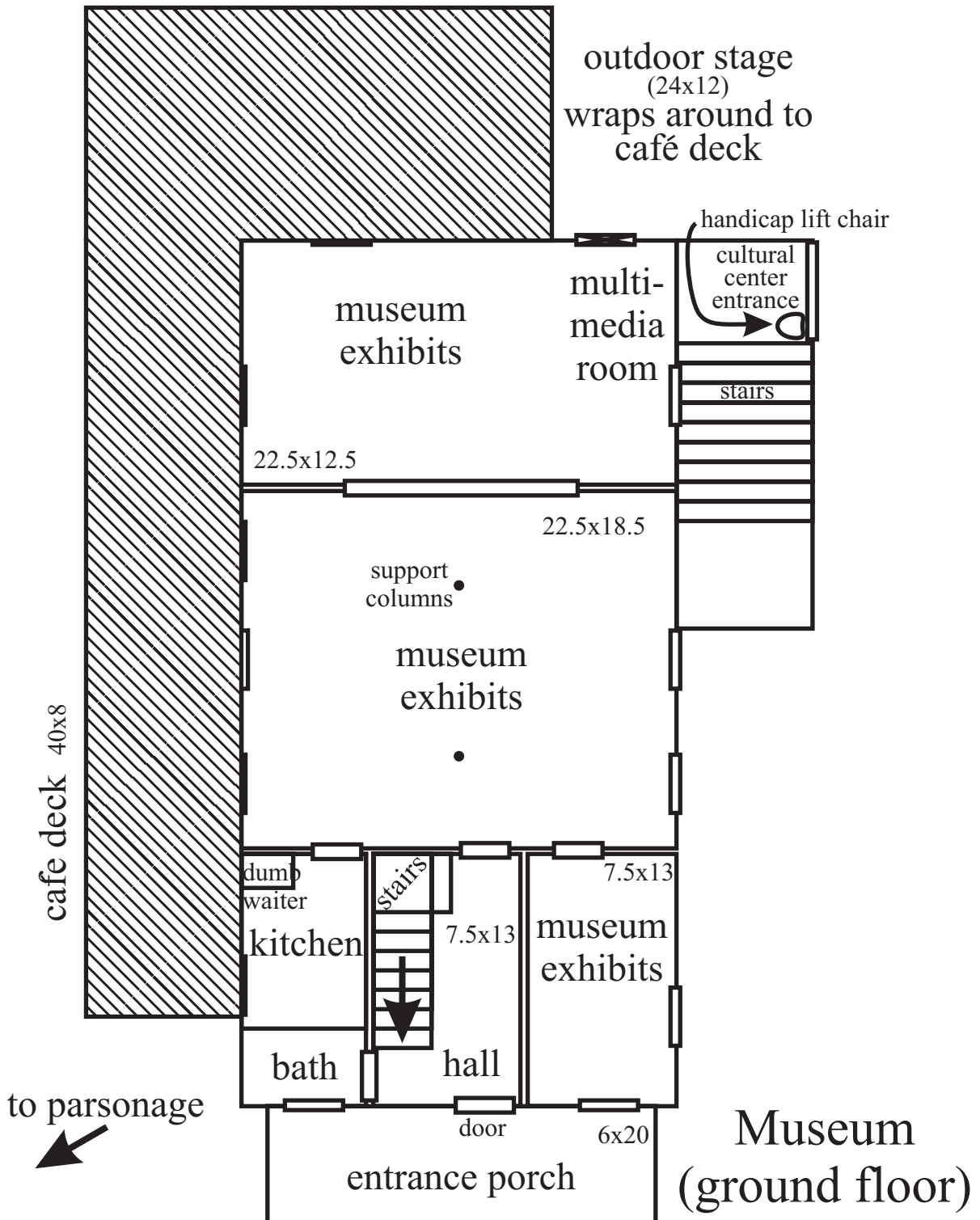
The old “Mountain View Inn” will become the new home for the museum. It was built as a dining and social gathering hall for island summer rusticators in the early 1900s.

The current museum displays and multimedia room would fit comfortably on the building’s ground floor. Upstairs, the well-lit open room can be easily adapted to diverse cultural and social activities.

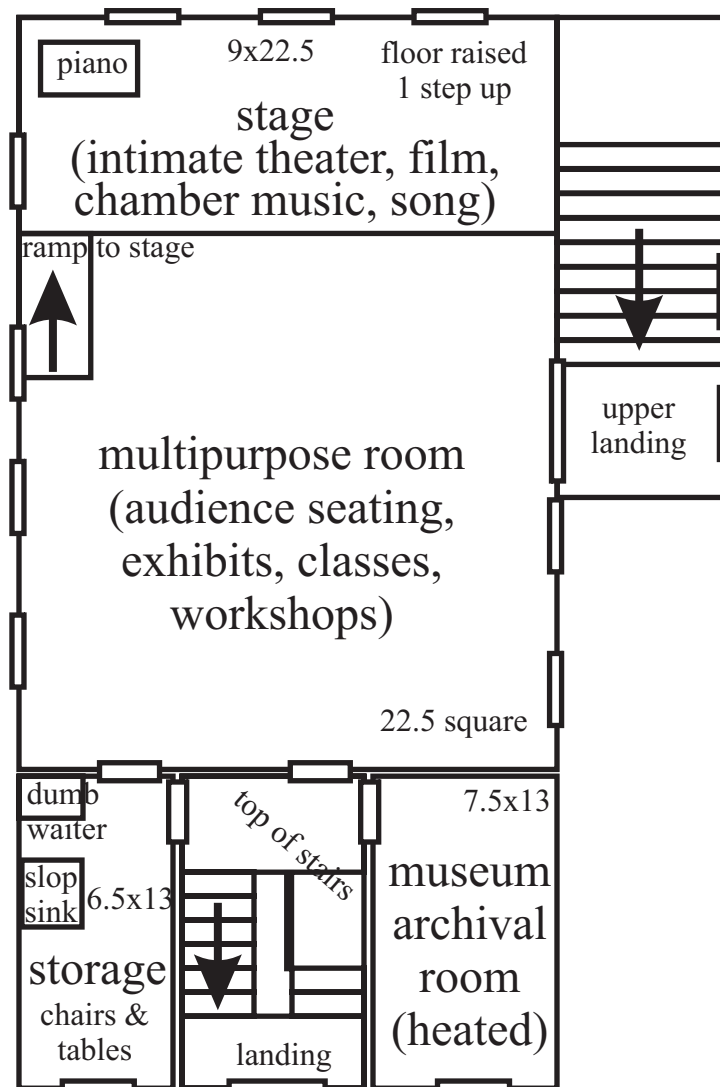
Plans also include landscaped garden and forest areas, a small museum shop, and a café located on a wraparound deck which can also double as an outdoor stage. The stage will face the parking and wooded area behind the building.

Moving the building to its new site will provide a wonderful location for **Cranberry House**: a permanent home for the museum plus a new multi-purpose cultural center.

# Museum floor layout



# Cultural Center floor layout



Cultural Center  
(upper floor) 6

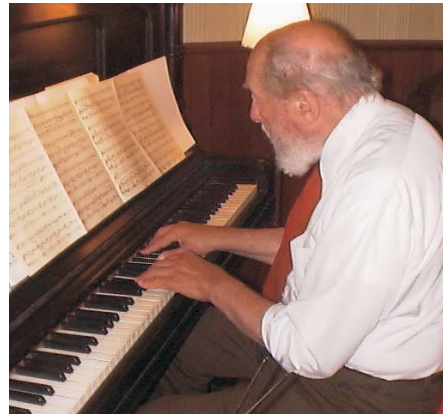
# Why have a cultural center?

For the past century, our neighbors on Islesford have been fortunate to have the Neighborhood House, with a large room suitable for a wide variety of cultural, artistic, and civic activities.

Cranberry Island never had a similar facility. Space in the Community Center is divided into small rooms, making it useful mostly for suppers and small meetings. The Church has poor acoustics and no real stage.

The 22' x 31' great room on the second floor of Cranberry House has a rustic look, with unfinished wooden walls and an open ceiling. It has good acoustics, and is an ideal place to host classes, workshops, films, and exhibits. The floor at the far end of the room will be raised one step, forming a stage for intimate theater or chamber music performances.

With the addition of these facilities, Cranberry House will become a true cultural and historical focal point for the island.



# Making the island stronger

Cranberry House will serve as a focal point for programs and events that encourage a well-rounded community life, and foster island pride and sense of place. It will complement, rather than compete with, Community Center activities.

Cranberry House will create job opportunities for islanders. Hosts will be needed for the museum, the café, and possibly the museum store. Artists, craftsmen, and musicians could earn income by teaching youth or adult workshops.

The café will add a much-needed service for island residents and their guests.

The landscaped garden offers a quiet, pleasant, yet easily-accessible place off the main road to sit down and relax among cathedral spruces.

Day-visitors will find the new location more convenient, being only half the walking distance as the current museum.

Nestled in a wooded area just steps from the Church, Community Center, and Fire Hall, Cranberry House will enhance the “village center.” Its outdoor stage, café, garden, and exhibit space—not to mention the extra bathroom—will all add to popular events traditionally held there, such as the Ladies Aid Fair.

Cranberry House will host a continuing calendar of activities in the heart of the island, enhancing the quality of life for all residents.



# Cranberry's Survival

The survival of Cranberry Island as a year-round community depends on the willingness of all residents to contribute their time, money, and ideas.

Already, major efforts are underway. The Manset Project tackles the problem of mainland parking, docking, and transportation. CIRT aims to attract new families to the island, and assist those who wish to remain. A new Comprehensive Planning Project will help guide island development decisions in coming years.

Cranberry House will do its part. Exhibits celebrating our island history; classes developing our latent talents; cultural events uplifting our yearning spirits: Cranberry House will host them all, enriching the quality of life for all islanders, young and old, year-round and seasonal. Establishment of Cranberry House will help us preserve our past to steer our future.

Cranberry House will enrich the quality of life for all islanders.

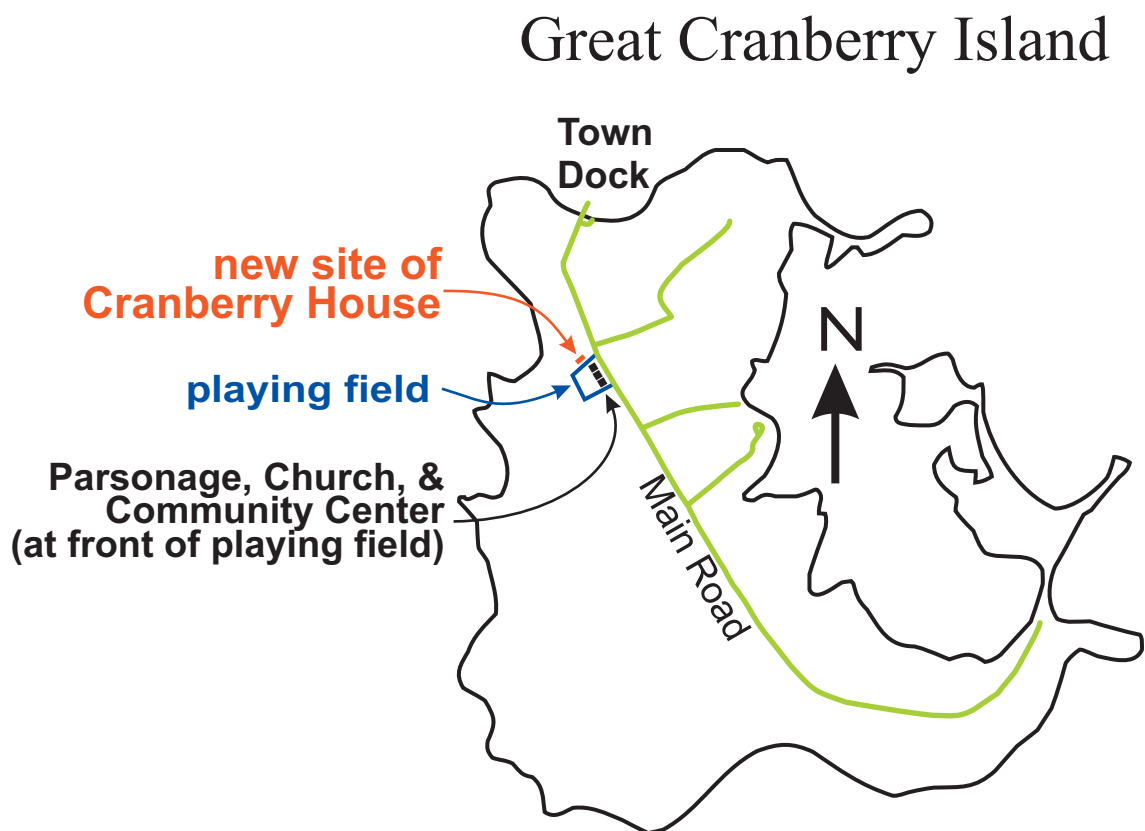
## Recognition opportunities

By creating Cranberry House, the Historical Society finds itself in the enviable position of preserving the fading memories of Cranberry Island's colorful past, while also enhancing the quality of life for future island generations.

You can help. All donations are welcome. The Historical Society is a 501(c)3 entity. As a substantial donor, you can receive not only the **satisfaction** of knowing your contribution helped enrich the community, but also significant **tax benefits**, plus lasting **recognition** through a permanent named remembrance item, if you wish, ranging from granite garden benches and restored windows to the complete museum or cultural center itself.

# Appendices

- 1 Great Cranberry Historical Society Officers and Trustees  
Cranberry House Committees
- 2 Cranberry House Budget
- 3 Multimedia Room Productions



## Great Cranberry Historical Society Officers and Trustees

### Officers

Wini Smart, President  
Susanne Shoemaker, Secretary

Beverly Sanborn, Vice President  
Bruce Komusin, Treasurer

### Trustees

Susan White      Kenneth Whitney      Charlotte Harlan      Deborah Wedge  
Jane Wilson      Charlene Allen      Owen Roberts      Phil Whitney  
Leslie Watson      Hal Newell, Jr.      Michael Macfarlan

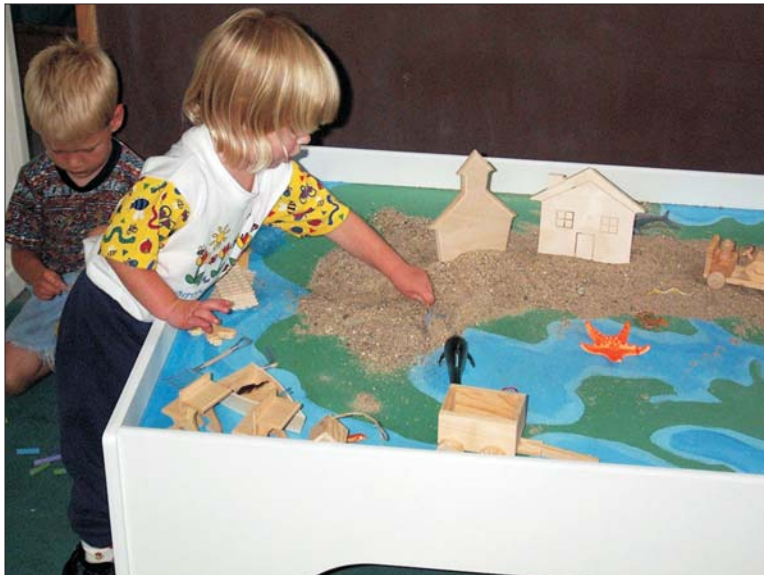
## Cranberry House Committees

### Building Committee

Phil Whitney (Chairman)      Sarah Newell      Gene Vance  
Sam King      Bruce Komusin      Wini Smart  
Geoff Wadsworth (advisor)      Kevin Russell (advisor)

### Fundraising Committee

Owen Roberts (Chairman)      Hal Newell, Jr.      Leslie Watson  
Susanne Shoemaker      Jane Wilson      Karin Whitney  
Bruce Komusin      Wini Smart



Kiddie Korner at the museum

## **Cranberry House Budget**

Budget is based on general contractor quote from Coastline Construction, Inc. Figures may possibly be reduced by using local subcontractors, or volunteers. Steps will be taken only as funds become available.

### **Step 1 - Purchase and move building**

\$35,000 cost of building from current owner  
\$40,000 new site clearing, rough grading, drainage; rough roadbed  
\$20,000 full foundation  
\$35,000 prepare to move building: carpentry, permits, line & passage costs  
\$20,000 move building  
\$1,500 engineering  
\$151,500 Total

### **Step 2 - Prepare building for basic use as museum & cultural center**

\$33,500 rough framing and structural support  
\$14,000 electrical rough-in service  
\$30,500 floors, lights, carpentry, painting  
\$33,500 old stair repairs (fire escape), new handicap stairs/entrance  
\$111,500 Total

These two steps would allow Cranberry House to open as both a museum and cultural center, but with no bathroom, café, handicap lift, exterior refurbishing, or landscaping. Additional fund raising would supply those needs in two or more additional future steps.

## Multimedia Room Productions

### Historical Society Publications

*Winter: The Other Season*, by Smart & Komusin (2004)  
*Hitty Preble of the Cranberry Isles, Maine*, by Smart & Komusin (2004)  
*Cranberry Road*, by Wini Smart (2002)  
*Riding with Tud*, transcribed interview by Jeff Weisbruch (2001)  
*If It Were Yesterday... A Historic Coloring Book of GCI*, by Wini Smart (2001)  
*The Heraldry of GCI: Working Lobstermen's Colors 2000*, by Bruce Komusin  
Reprint of *God's Pocket*, by Rachel Field (1999)  
*Salvaging Cargo from Wreck* Emily F. Northam, by Farnham W. Smith (1999)  
*An Interview with Ralph Stanley*, by Jeff Weisbruch (1999)  
*The Fairies*, a poem by William Allingham (1998)  
*The Asa D. Stanley House*, by Bruce Komusin (1997)  
*The Construction of Road "I-95" on GCI*, by Doris "Dot" McSorley (1996)  
*An Interview with Tud Bunker*, by Patti D'Angelo (1994)

### Historical Society Videos

*"Waddy" an Interview with Charles Wadsworth*, by Smart & Komusin (2003)  
*Fishing With Wesley Bracy, Jr.*, interview by Smart & Komusin (2003)  
*A Visit with Ada Rice*, interview by Smart & Komusin (2003)  
*Spinning Sheep Tales*, a talk about spinning wool, by Gail Grandgent (2003)  
*Manset Ribbon Cutting Ceremony*, 15 May 2003  
*Marjorie Phippen*, an interview by Smart & Komusin (2002)  
*Ralph Stanley & Friends*, down-home fiddling recorded at the Church (2002)  
*Night of Poetry & Music*, recorded at the Church (2002)  
*Carrie Richardson of Big Cranberry*, a play by Smart & Komusin (2001)

### Private Publications

*Surf, Stone, & Spruce*, poetry and island photos by Ted Harlan (2003)  
CD cover for Bandzulu's *Manoverboard*, with Kevin Russell (2003)  
*A Taste of Cranberry*, poetry and lino cuts by Susan D. Michalski (2002)  
CD cover for *nothing left but a fancy glow* by Kevin Russell (2002)  
*GCI, An Artist's Sketchbook*, watercolor sketches by Susan D. Michalski (2001)  
Numerous signs for Futures Group, Ladies Aid, Library, etc.