

# Cranberry Chronicle

NEWS OF CRANBERRY HOUSE AND GREAT CRANBERRY ISLAND HISTORICAL SOCIETY • JUNE 2020



## Island Connection

SOFIE DOWLING

*Starting school at Ashley Bryan School on Islesford 9.12.2006*

*Top row L to R:  
Nathaniel Philbrook, Matilda Allen, Sofie Dowling*

*Bottom row L to R:  
Oliver Blank, Louise Chaplin*

PHOTO BY SARAH CORSON

**I** was one of eight babies born in the Cranberry Isles in 2001–2002. Of those babies, the five in the photo above are graduating from Mount Desert Island High School this spring. The five of us are still good friends. As we grew up our interests diverged but whenever we passed in the halls of MDI High School each member of the group could be counted on for a smile, a wave, a high-five, or a more casual fist bump. Although I think we lose sight of it in our busy soccer, sailing, art, music, and school filled days this connection can be traced back to the islands we grew up on and the unique experiences we share from those years. I am so grateful for this built-in group of friends and will always remember the camaraderie, love, and wonderful goofiness of our interactions. A bond like the one we subconsciously share is not diminished by time or distance.

CONTINUED ON PAGE 8

GREAT CRANBERRY ISLAND  
HISTORICAL SOCIETY

BOARD

OFFICERS

Phil Whitney  
President

Jim Singerling  
Vice President

Ken Schmidt  
Interim Treasurer

Sharon Morrell  
Secretary

Nancy Wood  
Corresponding Secretary

TRUSTEES

Elaine Buchsbaum  
Colleen Bunker  
Tim Dalton  
Ingrid Gaither  
Miriam Hinnant  
Pixie Lauer  
Barbara Meyers  
Kitty Pierson (Honorary)  
Beverly Sanborn  
Rob St. Germain

CRANBERRY CHRONICLE

Sharon Morrell  
Editor

Brad & Lib Woodworth  
Design

Penmor Lithographers  
Printer

CONTACT US

Great Cranberry Island  
Historical Society  
P.O. Box 12  
Cranberry Isles, ME 04625  
info@gcihs.org

## Note of Appreciation

The board of directors of Cranberry House recognizes that during this unique and trying time everyone is feeling unsure, frustrated and even frightened about what is happening. Sickness, social distancing, and financial strain are certainly reasons to feel down but we want to remember that there are always things for which we can feel appreciative.

Thank you to the front-line workers who make it possible for life to continue as normally as possible, at the post office, the store, civic and public works and all the selfless folks on Mount Desert Island who have made countless deliveries to the town dock so that islanders can stay at home and still have the provisions they need.

Thank you to the intrepid boat captains and crews who have continued to operate the ferries for the benefit of all islanders.

Thank you to all the healthcare and emergency services providers who continue to do what they are always called upon to do even in the face of greater personal risks. We specifically recognize our own Cranberry Isles first responders and our three island healthcare workers, Jen Walls, Sharon Morrell and Michelle Hackett.

Finally, thank you to all Cranberry Islanders, near and far, for each doing your part to help keep us all healthy and safe.



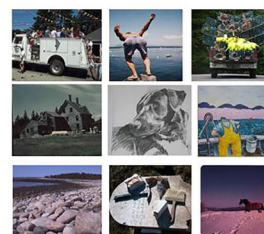
### Transitions

- Jessica Sanborn graduates from 8th Grade.
- Sofie Dowling, Louise Chaplin, Oliver Blank, Nate Philbrook, and Matilda Allen graduate from Mount Desert Island High School.
- Mary Bridget Horvath graduates from Canterbury School in New Milford, CT.
- Ken Schmidt appointed interim GCIHS Treasurer

### Summer 2020 Exhibit

If you recall, we announced our 2020 *Faces and Places* exhibit and called for participants in the December 2019 edition of the *Chronicle*. Over the winter, our theme developed into a patchwork idea (see story on page 11).

## PATCHWORK



**A GCIHS EXHIBIT FEATURING THE  
LIFE AND TIMES OF CRANBERRY  
ISLANDERS OF ALL SEASONS**



---

## President's Report

PHIL WHITNEY

**Fortunately, as of this writing, no residents have been diagnosed with Covid-19. But the statewide quarantine placed in effect in March nearly shut the islands down completely and continues at least through April. Most businesses were closed, all public events including those at Cranberry House were suspended, and ferry runs were reduced to two trips weekdays (noon mailboat and late afternoon commuter boat).**

**W**e have experienced an exceptionally quiet winter on the island. Weather-wise, conditions were very moderate overall, with temperatures milder than normal and only one snowfall of about four inches. Winds were constant, even though no significant power outages occurred, nor any significant property damage. There were, however, nine tree blowdowns across the Whistler Cove Trail. Just as Spring was arriving and activities around the island were increasing, islanders were caught up in the Corona Virus pandemic which was sweeping the nation. Fortunately, as of this writing, no residents have been diagnosed with Covid-19. But the statewide quarantine placed in effect in March nearly shut the islands down completely and continues at least through April. Most businesses were closed, all public events including those at Cranberry House were suspended, and ferry runs were reduced to two trips weekdays (noon mailboat and late afternoon commuter boat). The General Store managed to stay open, albeit with reduced hours, and the shelves remained fully stocked, thanks to the efforts of Hollie Stanley and Janice Murch. Sadly, since early March there have been almost no activities at Cranberry House, except for occasional teleconference meetings. We do not anticipate seeing many tourists or even seasonal residents during the early part of the summer, which implies potentially hard financial times ahead for GCIHS/Cranberry House. Chef César has been trapped in Brazil as the Brazilian borders have been closed to all traffic.

The Events Committee began meetings in February as usual, but due to the uncertainty of activities this summer, planning has been slower than normal. The committee has met sporadically and like everyone else in America, is struggling from week to week to plan ahead. Prior to the quarantine beginning in March, a number of events and activities had been held this winter at Cranberry House. Weekly movies were shown, and church services from New Hampshire were streamed every Sunday. Karin Whitney coordinated a Karaoke 17th Birthday Party for Hallie Sumner on January 31st. On February 2nd a Superbowl Party was held and the Super Bowl game was shown on the big movie screen. We hope to stream big entertainment and sports events in future months, depending on availability.

We have managed to keep working outdoors around the property as the weather has become more spring-like. Ben Sumner has cleared away the tree blowdowns from the Whistler Cove Trail. Both Whistler Cove and Preble Cove Trails are now officially open and maintained for the season. Clearing of brush and thinning of trees around the Samson Pond, the Smart Shack and the Gift Shop have been on-going. The Samson Pond was dug deeper and expanded to twice its original size. It will be landscaped by Ric Gaither. Plans are to re-stock both ponds with fish and include frogs and turtles.

The Fundraising Campaign and the Construction Addition have faced obvious challenges due to the pandemic, quarantine and stock market crash. Fortunately, we had raised enough funding to insure completion of the environmentally-controlled

CONTINUED ON PAGE 4

basement Archives area, the fire-escape and the Café room addition off the museum. Getting mainland workers out here has been especially challenging. Currently we are seeing some minimal construction work done every day, but we are weeks behind schedule. The back-up van which was used to support golf cart passenger operations and hauling freight for the cafe finally disintegrated and was junked. Since our Cranberry Explorer golf cart is already six years old, and has accumulated a huge amount of mileage, we had begun researching the possibility of purchasing a new cart and relegating the old cart to back-up and emergency service. These plans have been delayed until our funding picture becomes clearer. Karin Whitney will continue to operate the Sea Wind 2nd Chance Shop this season and once again all proceeds will go toward supporting the fundraising campaign.

*Volunteer and artist Cheryl Moore completed an amazing drawing which reflects all the buildings, trails and ponds, as viewed from the driveway entrance on Cranberry Road.*

I hope we will be able to operate all aspects of Cranberry House as normal this summer. Time will tell and we are keeping our fingers crossed. By the time this *Cranberry Chronicle* hits the newsstands in late June, we most likely will know what the season is going to look like. Stay optimistic, stay safe, and make plans for a great season at Cranberry House as the island, and the nation, rebound healthier and stronger economically. We hope to see you.





# General Manager's Report

BEN SUMNER

## GCIHS 2020 Events

Please visit:

**GCIHS.org Events page**  
(<https://www.gcihs.org/events/>)

### Facebook page

(<https://www.facebook.com/CranberryHouseGCIHS/>)  
to get the latest information on the current status of our operations throughout 2020.

Feel free to contact me at [manager@gcihs.org](mailto:manager@gcihs.org) with any questions or suggestions.

We invite you all to come back as you are able this year.



*Whale's Tale Gift Shop*



*Sea Wind 2nd Chance Shop*

**L**ike everyone else, the Great Cranberry Island Historical Society has been working through the current environment one day at a time. We are preparing for the worst but hoping for the best in the coming season. We have been fortunate in that the long-term commitment of our donors and the faithful efforts of our volunteers during good years have the organization in a position to weather a tough one. This volume of the *Cranberry Chronicle* reflects the ongoing quality of the efforts of our Publications Committee. As highlighted elsewhere in this issue, the Archives Committee has completed a new exhibit for the museum. Joe Connell, of Great Cranberry Island, will take over responsibility for the gardens this coming year. We want to thank Sarah McCracken for her fine efforts over the past two seasons.

The exterior work for the addition was completed prior to the onset of winter and freezer space for Hitty's Café has been carved out from the former store area of the museum. Our objective of having the Archives Floor up and running this spring has not been realized. However, work has been moving forward as possible and will continue throughout the summer. Thanks to the Campaign Committee and the contributions of many donors, the funding is available to complete the Archives Floor without any financing.



*The exterior work for the addition was completed prior to the onset of winter. Work will continue throughout the summer.*

---

## Capital Campaign Update

JIM SINGERLING, CHAIR CAMPAIGN COMMITTEE

---

**H**ow nice to see summer blossoming around the Cranberry Isles. Our family is no different than any other family. We always look forward to the end of winter. We look forward to joining friends and acquaintances who enrich our quality of life. So many of these people reside within the Cranberry Islands community.

As most of you recall, the Trustees of the Great Cranberry Island Historical Society authorized a Capital Campaign to generate capital funds to enhance our museum and archiving space in Cranberry House and to generate the funds needed to support part-time staff compensation.

This campaign has been guided by the fundraising counseling firm of Gary Friedmann & Associates located in Bar Harbor. We are grateful for their guidance and counsel that has facilitated our success in reaching out to a broad spectrum of supporters.

We all hold cherished memories of experiences and people in our island community. These memories fuel the desire to support the work done here at Cranberry House.

We are honored to have been the beneficiaries of generous bequests from Cranberry Island patrons Bruce Komusin and Chris Johnston and his late wife Vicki. This campaign could never have been launched without those quiet, sincere commitments. Chris Johnston has continued to financially support the GCIHS and our campaign. It is that local commitment which helped make the case for this campaign. We owe Chris an enormous “Thank you.”

**Please contact us  
at [manager@gcihs.org](mailto:manager@gcihs.org)  
for assistance or more  
information about various  
contribution avenues.**

We can now announce a major financial gift of \$50,000 from philanthropist Charles Butt and an initial gift of \$10,000 from donors David Milliken and Jill Drinkwater. The Milliken-Drinkwater family has a long and influential history in the area and we are fortunate that they have taken an interest in our cause. Mr. Milliken has included a provision for an additional challenge grant. Once \$60,000 is raised, he will contribute \$30,000 more. I ask all of you to help us reach out to the greater island community so that we may collectively raise the \$60,000 needed to take advantage of Mr. Milliken’s generous donation.

In other news, the museum exterior building structure is completed on the rear side of Cranberry House. Construction is continuing on the lower level Archival Floor. GCIHS has incurred no indebtedness to accomplish this addition. With your help, the Capital Campaign continues to fund our construction program as well as ensuring staff compensation in the part-time archival and business management staff positions. We have also built-out the Hitty’s Café pantry storage area. This has been an amazing process.

CONTINUED ON PAGE 7



**Great Cranberry Island  
Historical Society  
Capital Campaign**

**Pledges and Donors**

As of April 30, 2020

We are so grateful for all of you who have made three-year pledges to our Capital Campaign.

If you have any questions about the status of your pledge, please contact:

Ben Sumner  
General Manager  
manager@gcihs.org

Anonymous (3)  
Frederick Appell  
Astor Street Foundation  
Ingrid Avery  
Marianne Avery  
AWARE Foundation  
Bass Harbor Yacht Club  
Helen Bertles  
Elaine Bishop & Mary Brown  
James Bradley  
    In Memory of Virginia Pugh Bradley  
Stephen Bradley  
    In Memory of Pat Bradley  
Buchanan Family Foundation  
Elaine & Peter Buchsbaum  
Katrina Lynn Carter  
Gail Cleveland  
Gaile Colby  
    In Memory of Shawn King  
Karl & Mary Corley  
Neal & Candace Corson  
Alan & Linda Cowles  
Timothy Dalton  
Davis Family Foundation  
Susan A. Dunn  
Ken Dunton & Susan Schonberg  
Cathy Durham & Aaron Britt  
Eric C.W. Dunn Charitable Fund  
Anna Fernald  
    In Memory of Hugh Smallwood  
Jean Fernald  
John French  
Richard & JoAnne Fuerst  
Richard & Ingrid Gaither  
James Gertmenian & Sam King  
Michael Glaser  
Corinne Goodrich

Elizabeth Gordon  
Gwendolen Elwell Flanagan  
    Foundation  
Gordon Hardy & Alice Dunn  
Miriam Hinnant  
Robert & Emily Howell  
Jim & Cathy Ingham  
    In Memory of Hope Hamor Merrell  
Chris Johnston  
Nancy Jones  
Sarah & Clay Jones  
John L. Nicholas Kuczynski, IV  
Pixie Lauer  
Chong & Judith Lim  
    In Memory of Florence & Herbert  
    Towns  
Lincoln & Ruth Lyman  
Mickey MacFarlan Estate  
Rick & Teri Malmstrom  
Patrice Marshall  
Armen & Fulvia Marsoobian  
Boyne and Teri McHargue  
David Milliken & Jill Drinkwater  
Sharon Morrell  
Alice Murphy & Bill Bancroft  
Morrison Newell  
Marvin & Emiline Ott  
Richard & Alice Pierson  
Diane Polky  
    In Memory of Wini Smart  
Henry Pugh  
Henry Raup  
Eileen Richards  
Read Roberts & Monique Castiaux  
Nathan Rome & Bonnie Alpert  
Beverly Sanborn  
Ken Schmidt & Sue Hallett

Sea Wind 2nd Chance Shop  
Gordon Shaw  
    In Memory of Mary G. Shaw  
    (friend of Sammy Sanford)  
Charles Sheppard  
    In Memory of Winston  
    Sheppard  
Cindy Shulak-Rome & Dan Rome  
Chris & Jessica Singerling  
James & Molly Singerling  
Joe Singerling  
Robert & Lucille St. Germain  
Ann & Dick Sullivan  
Benjamin & Darlene Sumner  
Susan A. Dunn Charitable Fund  
The Little Family Trust  
Michael & Lalie Tongour  
John & Veronica Tyrrell  
Kate Valenta & Alex Johnston  
    In Memory of Victoria H.  
    Johnston  
Geoff Wadsworth & Sharon  
Whitham  
Laurie Wadsworth  
    In Memory of Charles  
    Wadsworth  
Barbara & Don Weinreich  
Michael & Jennifer Westphal  
Phil & Karin Whitney  
    In Memory of Bruce Komusin  
Thomas Williams  
Sarah & Mark Williamson  
Nancy & Cameron Wood  
Brad & Lib Woodworth  
Joette Zaremba

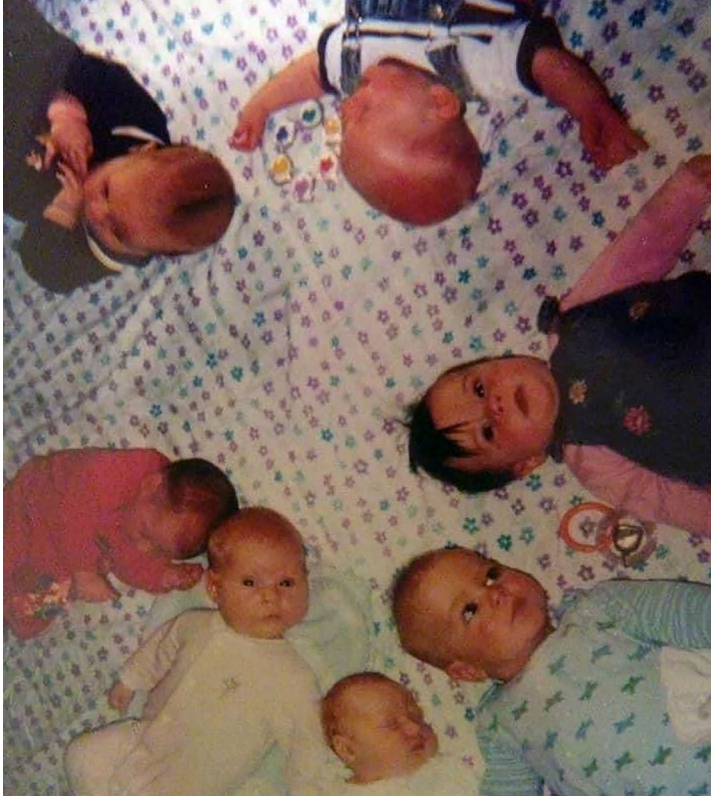
Currently, the \$450,000 GCIHS Capital Campaign has achieved funds raised in excess of \$380,000 (not including the challenge grant proposed by Mr. Milliken).

If we are fortunate enough to exceed our goal of \$450,000, we will allocate the additional funds toward completing the third-floor stage and audio-video capabilities of Cranberry House.

We are eternally grateful to all of you for your support and commitment to leave the woodpile higher than we found it.

With gratitude,

Jim Singerling and the GCIHS Campaign Committee



*Island babies before they started school*



*L to R: Matilda Allen, Sofie Dowling, Louise Chaplin*

PHOTO BY ROB BENSON

I am so grateful for this built-in group of friends and will always remember the camaraderie, love, and wonderful goofiness of our interactions.

– SOFIE DOWLING



## Cranberry General Store

BARBARA MEYERS

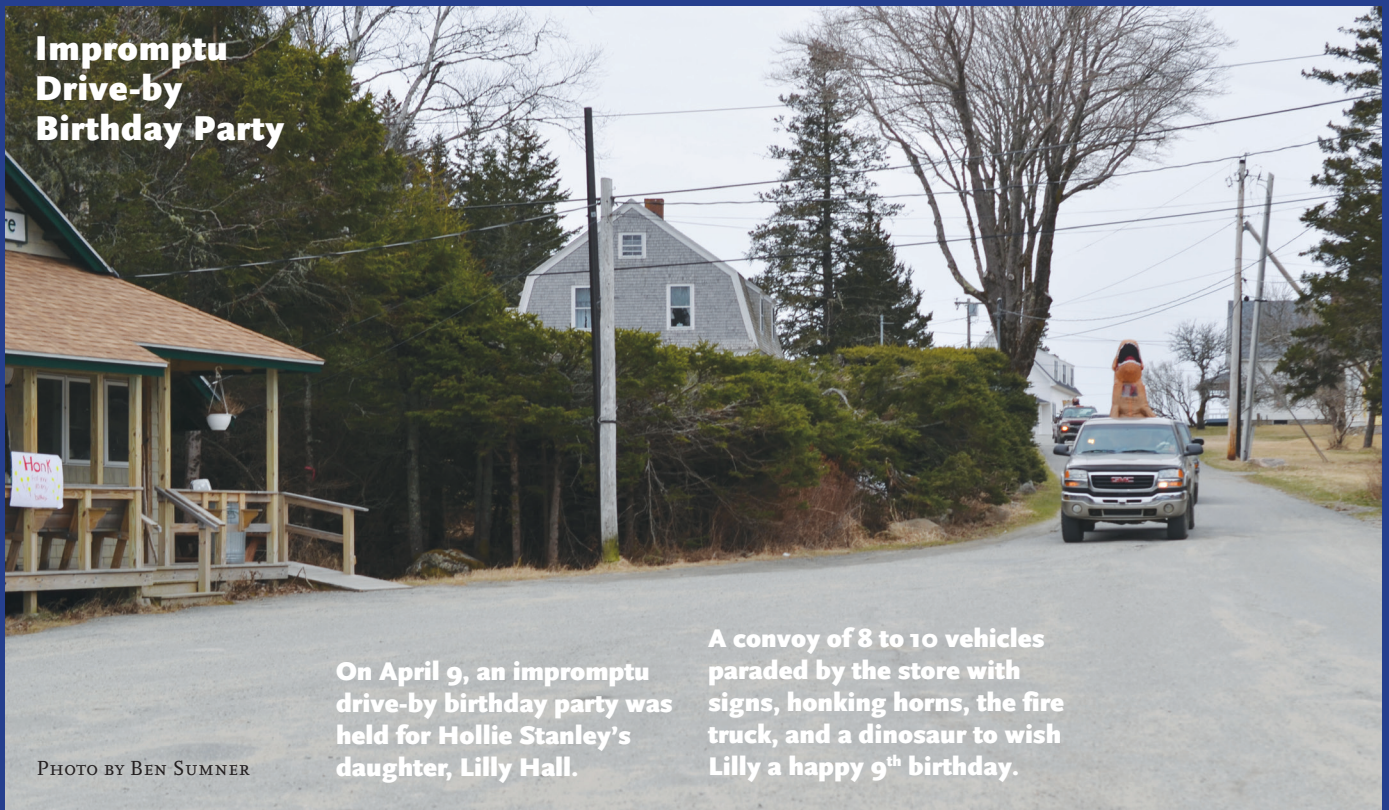
**T**he Cranberry General Store has really come through for island residents during the Coronavirus pandemic. The shelves are well stocked and sparkling clean and the refrigerated cases are full of dairy essentials and fresh vegetables. This is one store that never ran out of toilet paper! Manager Hollie Stanley says “Our intention is to provide as much as possible for the community right



here on the island, stretching the time between trips to the mainland. This will help folks avoid frequent trips and unnecessary travel. We appreciate all the local support we’ve gotten during this challenging time.” It has been a tremendous relief to get everything we need at Cranberry General, thereby avoiding the stress of crowded supermarkets in bigger towns. Let’s thank them by continuing to support this island institution now, and when times get back to normal.

*Hollie Stanley*

PHOTO BY SOFIE DOWLING



### Impromptu Drive-by Birthday Party

On April 9, an impromptu drive-by birthday party was held for Hollie Stanley’s daughter, Lilly Hall.

A convoy of 8 to 10 vehicles paraded by the store with signs, honking horns, the fire truck, and a dinosaur to wish Lilly a happy 9<sup>th</sup> birthday.

PHOTO BY BEN SUMNER



## Archives News

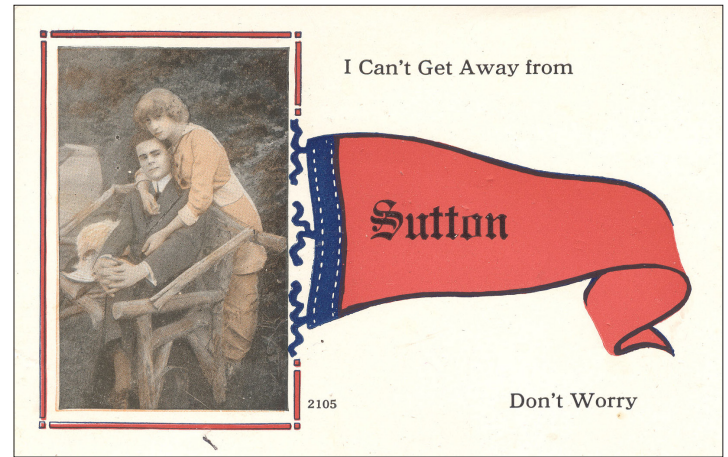
ANNE GRULICH

**T**his winter I catalogued the remaining items from the large Macfarlan Family Foundation donations and a charming gift from Kristin Howard of postcard correspondence to Mrs. Clara Rice. The recently upgraded NAS server and Axiom internet capabilities allowed me to work from home with lightning speed. Some highlights from the Macfarlan donation are a family album, photographs, and slides from the 1940s-'50s, and several 19<sup>th</sup>-century deeds (GCIHS 2019.427.2816).

Here's a picture of Mickey with his father, Douglas Macfarlan.



*Mickey with his father,  
Douglas Macfarlan  
(GCIHS 2018.416.2823C.)*



Kristen Howard's collection of early 20<sup>th</sup>-century postcards and assorted Bunker ledger pages (GCIHS 2019.445.2825-2828) found its way to her from Helen Fernald and Anne Namnoum. Lynne Birlem's epic MDI-region genealogy suggests 10 children for Clara Adeline Richardson Bunker Rice (1847-1923).

The 100 postcards (1910-1917) are addressed to Mr. and/or Mrs. Wilbert A. Rice, Mrs. Clara Rice, Mrs. Caddie Rice. They are brief notes inquiring about the weather, health, visits, birthdays, and holiday greetings from family and friends on pretty, mostly seasonal postcards. (These are one-cent postage stamps so the "penny for your thoughts" expression comes to mind.) As I was poking into Clara's history, I discovered an April 15, 1910, Bar Harbor Record article describing how Clara was rescued from a boating accident off GCI. Clara was post-mistress on Sutton Island. She married a Fernald, then Charles Edward Bunker, and then she wed Wilbert Augustus Rice in 1893. There are three houses in a row on Sutton that are connected to Clara Rice including Kristin Howard's house.

We have Chuck Liebow to thank for some background on the 1879 Schooner Como and Charles E. Bunker ledger sheets in Kristin's donation (GCIHS 2019.445.2827). This group of five ledger sheets tally Charles E. Bunker's debits and credits for his voyage on the Como with a cargo of "cocoanuts, mahogany, and cedars in account with Odio & Perozo of New York." These loose ledger pages are dated February 6-21, 1879. There are 34,505 cocoanuts; 4 logs mahogany; 4 logs cedar; and 8 logs cedar. The Schooner Como was built in Cherryfield 1873; No.125172; 133 tons. Charles E. Bunker was master 1877.

Another significant accomplishment was the Board's approval of the Collection Policy and Procedures document and the Collections Emergency/Recovery Plan





---

## To All the Restaurants I Have Loved Before

CHEF CÉZAR FERREIRA

### UPDATE

Unfortunately, Cezar was unable to depart from Brazil prior to the border closing. Currently, he is unable to return to Cranberry Isles until at least the end of May, possibly later depending on circumstances.

We will keep you updated on our GCIHS Facebook page.

**I** was astonished by the way we used to be, at the casual way we ordered food in restaurants. Every time I get into Brazil and head down to the beaches of Ubatuba, I always remember this dish - Moqueca, that is a flaky white Brazilian fish stew that takes coconut milk, Leite Dende (*a vegetable oil from the north*), cilantro, peppers, lime juice and onion served with white rice. A server brought some cocktails Caiperinha (*sugar cane alcohol and lime juice*), and we sat there enjoying each other's company smiling, and chatting, looking beyond into a sea of blue and green coastal waters, calming and relaxing.

A fair walk on the beaches and walking up to a food truck, standing in line for crispy Pasties (*Empanada*) in a basket with hot sauce and a very cold beer on hand we would dive into the oceans and walk along the beaches filled with people and restaurants.

In New York City I would specially go to a pizzeria on the Lower East Side. Their pizza, baked in a coal oven with fresh mozzarella, tomato sauce, and a fair amount of fresh basil – an experience that I never missed while in New York.

Running a sandwich shop called Hitty's Café on Great Cranberry Island, making sandwiches with fresh daily soups and crispy salads, fresh baked cookies, brownies and milk shakes. I had enjoyed with pleasure serving tourists and residents and children.



Cezar Ferreira, Chef at  
Hitty's Café

Sitting apart from them in my establishment, we'd chat and exchange stories about their travels and where they were coming from. It seems now that was a long time ago. But now things have changed. Summer's beginning is uncertain. Will we be opening on time, or at all? This season is in question. Of course, we will continue with certain regulations and caution this summer if permitted. However, I'm still in Brazil and there are no flights out until at least May or maybe later, as winter is setting in and the cold weather has started here. This season will be challenging for all. Be safe and stay home for now.



## Lemon Bars

CHEF CÉZAR FERREIRA

### Ingredients

1 cup – butter, softened  
1/2 cup – white flour  
2 cups – all-purpose flour  
4 eggs  
1 1/2 cups – white sugar  
1/4 cup – all-purpose flour  
2 lemons – juiced



### Preparation

- **Step 1**

Preheat oven to 350 degrees F (175 degrees C)

- **Step 2**

In a medium bowl, blend together softened butter, 2 cups flour and 1/2 cup white sugar.

Press into bottom of an ungreased 9" x 13" pan.

- **Step 3**

Bake for 15 - 20 minutes in the preheated oven, or until firm and golden.

In another bowl, whisk together the remaining 1 1/2 cups sugar and 1/4 cup flour.

Whisk in the eggs and lemon juice.

Pour over the baked crust.

- **Step 4**

Bake for an additional 20 minutes in the preheated oven.

The bars will firm up as they cool.

For a festive try, make another pan using limes instead of lemons and add a drop of food coloring to give a very pale green.

After both pans have cooled, cut into uniform 2" squares and arrange in a checker board fashion.

## Sunny Day Sweeping the Clouds Away... Caroll Spinney, an Island Connection

PHIL WHITNEY

**M**ost of you may be young enough to remember Big Bird on the television series *Sesame Street*. News accounts noted billions of people all over the world knew who Big Bird was but very few knew the man inside the bird, Caroll Spinney. Spinney was discovered by the Muppets Master, Jim Henson, and was hired to debut on *Sesame Street* in 1969, both as Big Bird and as Oscar the Grouch. His career lasted nearly fifty years, until 2018. *The Week* magazine noted “Caroll Spinney was the soul of children’s television for nearly fifty years.” The same magazine also quoted Spinney, “Most people completely forget what it was like being a kid by the time they grow up. I never got over it.” Associated Press’ Andrew Dalton reported, “Spinney gained huge fame that brought international tours, books, record albums, movie roles and visits to the White House.” *The Week* magazine also noted “He made guest appearances on the *West Wing*, *Saturday Night Live*, sang with Ray Charles and met eight First Ladies – all while wearing the yellow suit.”

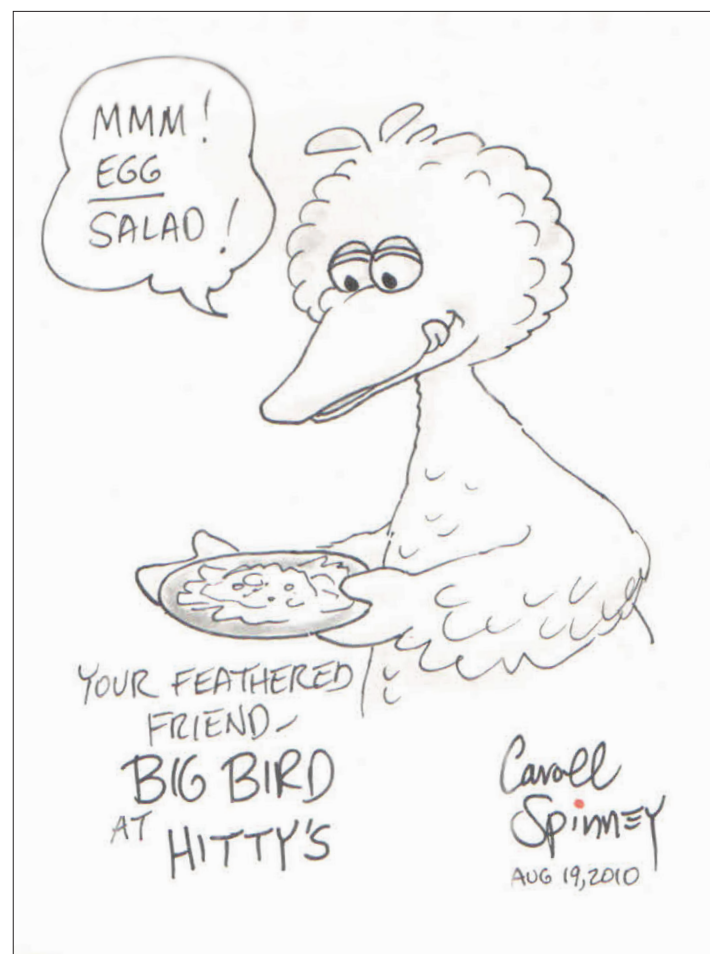
In 1986, Spinney was tagged by NASA to travel into space “to increase awareness of its work among children.” His Big Bird suit (8'2" in height) proved too big to fit in the shuttle. A teacher, Christa McAuliffe, took Spinney’s place aboard the *Challenger*. She was killed with the entire crew when the spacecraft exploded shortly after takeoff. Spinney watched the horrifying event from the ground.

Caroll was a part of Cranberry Islanders Naomi and Sally McShea’s extended family. He visited the McShea family at Cranberry Island several times beginning in 2010 and always dropped by to visit Cranberry House, often accompanied by Naomi and the family. He had lunch at Hitty’s Café and presented Karin Whitney, then current operator of the café, with an autographed drawing he created of Big Bird (*see drawing at right*). I was fortunate enough to have several very pleasant conversations with him. He was very impressed with the Cranberry House operation. He commented that he loved the variety of events we presented, especially our efforts to provide programs for the children. On his

last visit, he volunteered to perform a free Big Bird show at Cranberry House and we agreed to try and make it happen. Sadly, his health began failing after this visit and he never made it back to Cranberry House.

*Caroll Spinney passed away in December 2019.*

*Thanks for the memories, Caroll.*



*Big Bird drawing by Caroll Spinney*



# Support Cranberry House

Membership donations received from November 1, 2019 through April 30, 2020.



## Become a Friend of Great Cranberry Island Historical Society

**Friends: \$25**  
**Family Friends: \$50**  
**Donors: \$100**  
**Supporters: \$250**  
**Patrons: \$500**  
**Benefactors: \$1,000+**

- Support Special Projects through your extra special contributions.
- Donate in Honor of a Loved One.

- Fill the Donation Jars at the museum and on the shuttle, or at movies, lectures, and other events.

Whatever you can afford, we will sincerely appreciate it.

- As a 501(c)(3) non-profit institution, contributions are tax deductible.

- Remember – one forward-thinking person began the process with a single donation.

Look what's happened in just eleven years!

## Friends

Elsa Comiskey  
Dick Atlee & Sarah Corson  
Carl Little & Margaret Beaulac  
Ronald P. Mountain  
Patricia M. Pinkham  
The Little Family Trust

## Family Friends

Stephen Bradley  
Robin Freeman  
Nancy & Steve Homer  
Kathe McCoy  
Naomi McShea  
John & Veronica Tyrrell

## Donors

Dr. Allan Alson, Sue Ann Glaser,  
& Julianna Alson  
Katherine Muhlfeld Bell  
Lynne Birlem

James N. III & Julianne R. Brawner  
Cranberry Club  
Richard Haydock  
Henry A. Raup Trust  
Lisa & Jay Pierrepont  
Robert & Lucille St. Germain  
Gordon Shaw  
Jeffrey White

## Supporters

Nancy Harris

## Patrons

Charles Sheppard  
Cameron & Nancy Wood

## Benefactors

Astor Street Foundation  
Mr & Mrs Orton P. Jackson, Jr.



GCIHS COLLECTION

The Great Cranberry Island Historical Society  
P.O. Box 12  
Cranberry Isles, Maine 04625



The Pool, Great Cranberry Island

---

**Order & Membership Form Instructions:**

1. Copy this page, including your address mailing label, right.
2. Add the desired giving level of your Friends Membership.
3. Indicate Newsletters by Email if you prefer a digital copy.
4. Make check payable to GCIHS for grand total.
5. Mail using the enclosed pre-addressed envelope.

Website: [gcihs.org](http://gcihs.org) Email: [info@gcihs.org](mailto:info@gcihs.org)

**Go to [gcihs.org/support/](http://gcihs.org/support/) and click on "Donate" to contribute through PayPal.**



Old truck, Great Cranberry Island

---

**Friends of Cranberry House Membership** *Renewal for 1 year*

Indicate amount corresponding to the various giving levels.

- |   |   |
|---|---|
| <input type="checkbox"/> Friend (\$25 to \$49)        | <input type="checkbox"/> Supporter (\$250 to \$499) |
| <input type="checkbox"/> Family Friend (\$50 to \$99) | <input type="checkbox"/> Patron (\$500 to \$999)    |
| <input type="checkbox"/> Donor (\$100 to \$249)       | <input type="checkbox"/> Benefactor (\$1,000+)      |

2020 Membership Year, if not already paid: \$ \_\_\_\_\_

2021 Membership Year: \$ \_\_\_\_\_

**Grand Total** \$ \_\_\_\_\_

**Please Send Future Newsletters as:**

E-mail only. Email: \_\_\_\_\_

Printed copy \_\_\_\_\_

**Change of Address**

Please complete if your name or address has changed from your printed label:

Name: \_\_\_\_\_

Address: \_\_\_\_\_  
\_\_\_\_\_

Email: \_\_\_\_\_

Other notes: \_\_\_\_\_